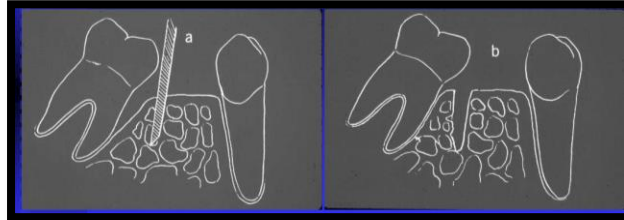


SPOTTERS

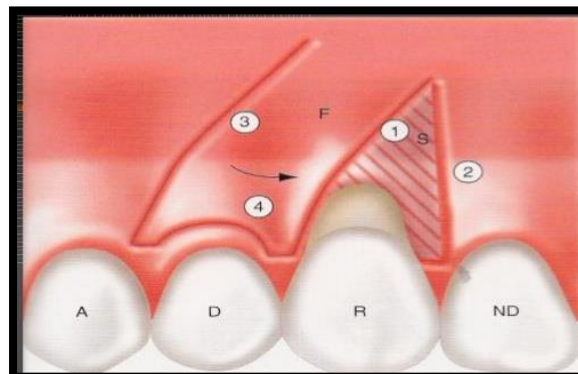
1) Identify the procedure.



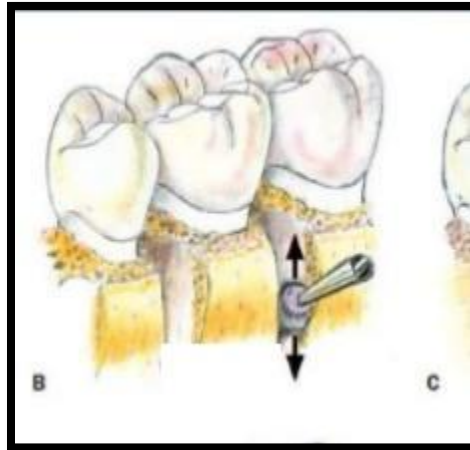
2) Describe its clinical features in brief and state the differential diagnosis of the same.



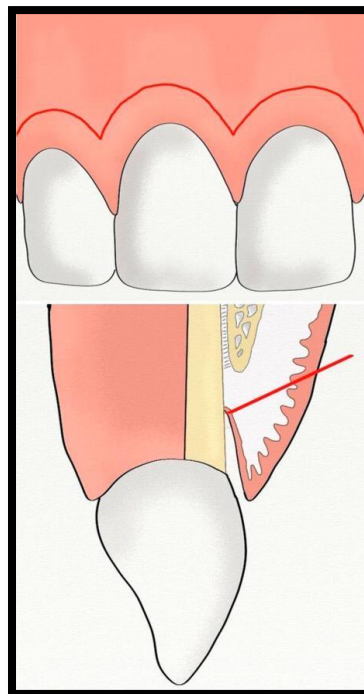
3) Identify the surgical procedure and enumerate its steps.



4) Enumerate the steps in resective osseous surgery and identify the given step.



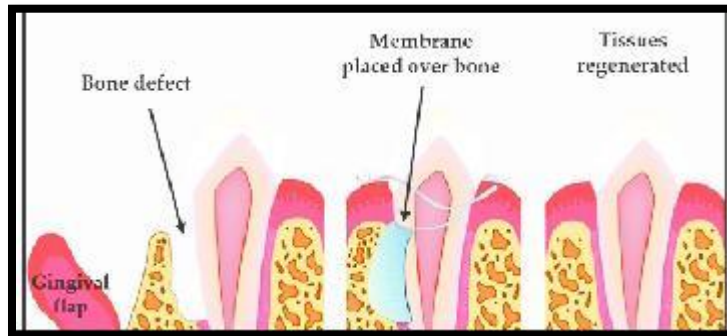
5) Identify the incision demarcated and when is this incision used.



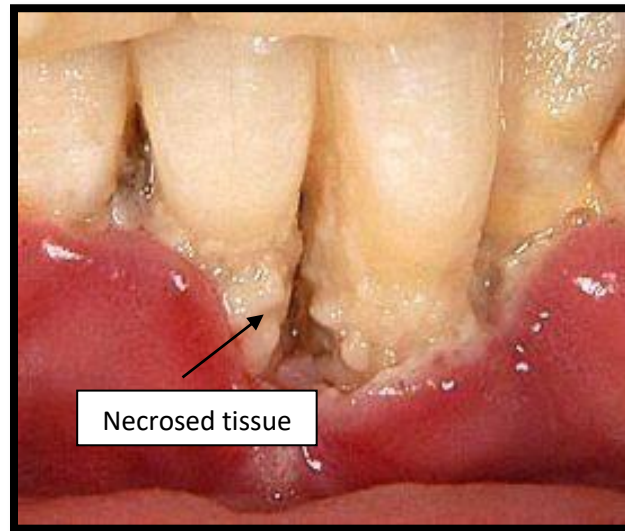
6) Identify the defect and enumerate the treatment options for the same.



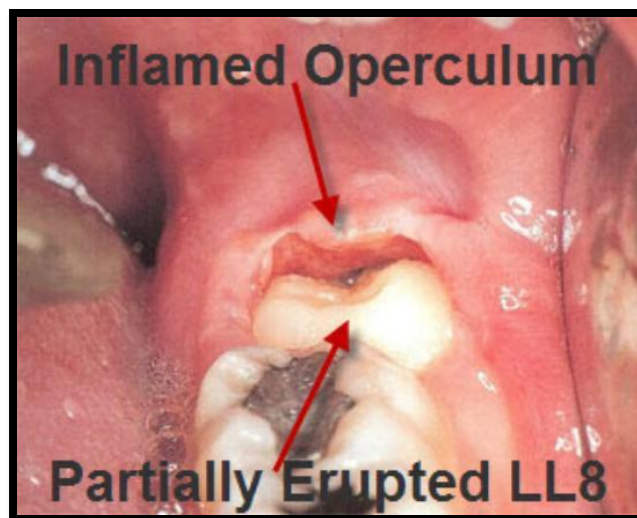
7) Identify the procedure below and mention the principles of the same.



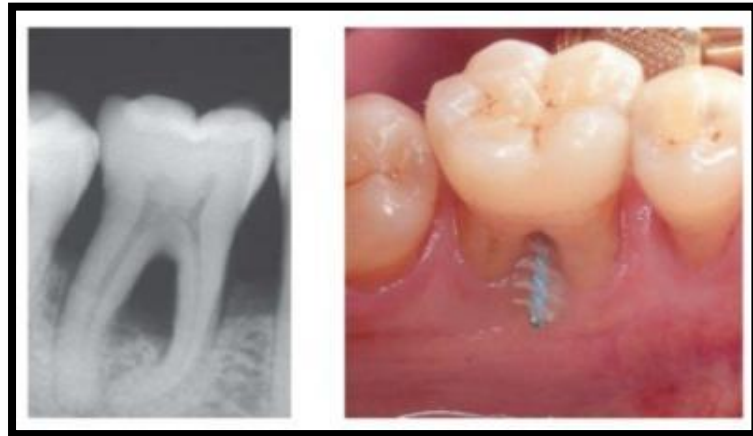
8) Identify the lesion and mention its etiological factors.



9) Identify the condition and mention its treatment.



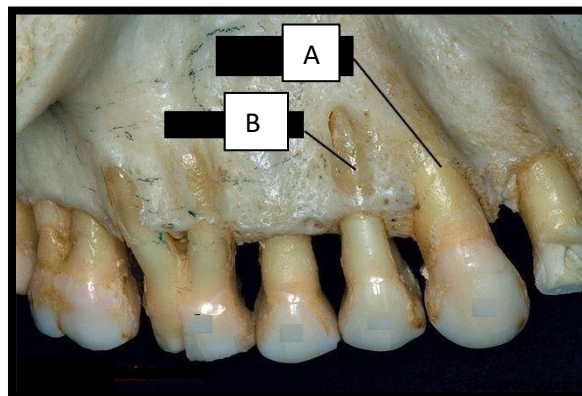
10) Identify the grade of furcation and classify furcation defects.



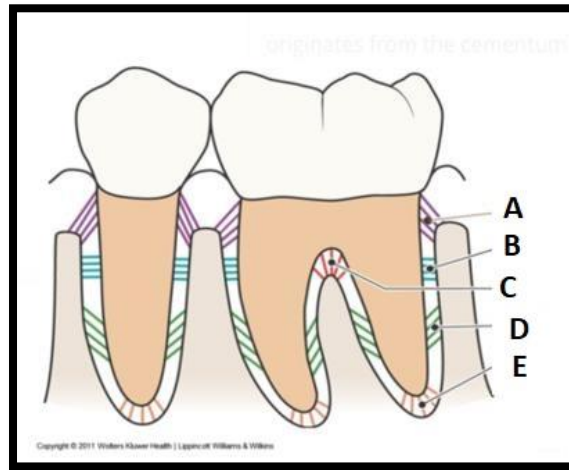
11) Classify Periodontal Pockets and identify the given lesion.



12) Identify and write their definitions.



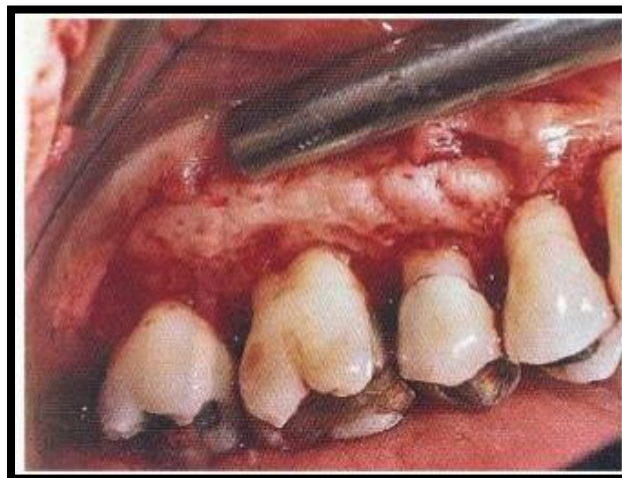
13) Identify the fibres and functions of 'D' fibers.



14) Identify the class of recession and enumerate the causes of gingival recession.

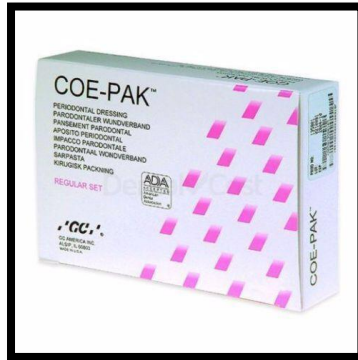


15) Identify the defect and mention its treatment.

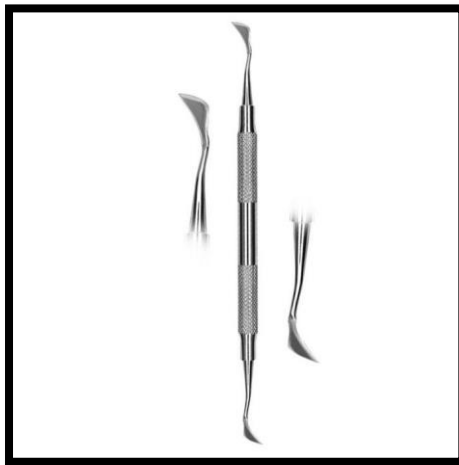


INSTRUMENTS

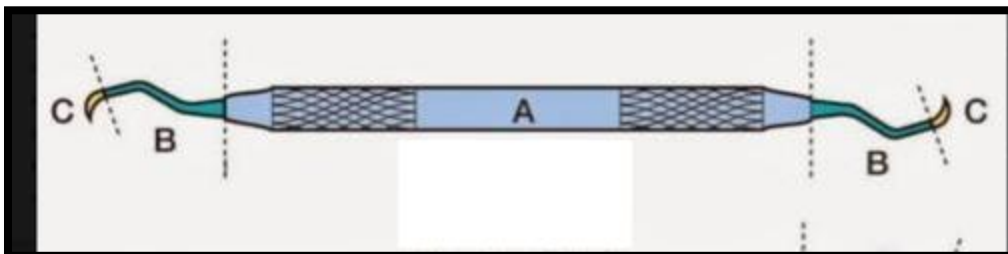
1) Identify and state its uses.



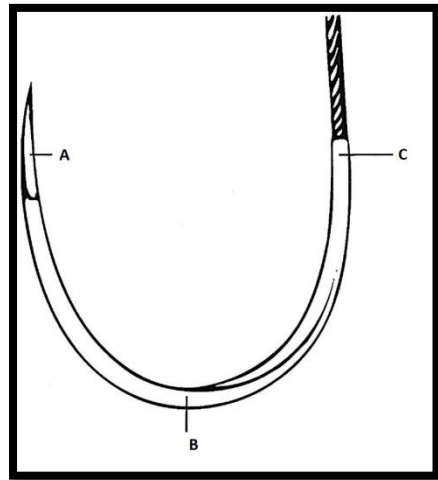
2) Identify the instrument and state its uses.



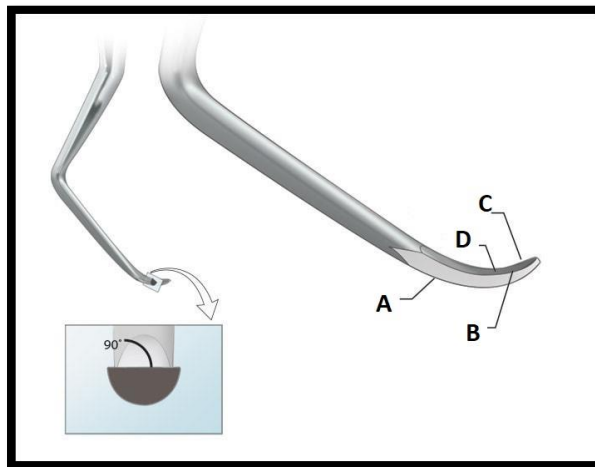
3) Label the various parts of the instrument.



4) Name the parts of the suturing needle.



5) Identify the instrument and label the pointed parts.



- 6) **Gracey Curette #11/12: Where is it used? And state 2 difference between Universal and Gracey Curette.**



- 7) **Name the instrument and mention its uses.**



- 8) **Identify the probe and mention its marking.**



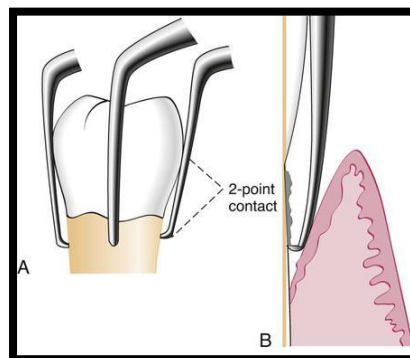
9) Identify and mention its use.



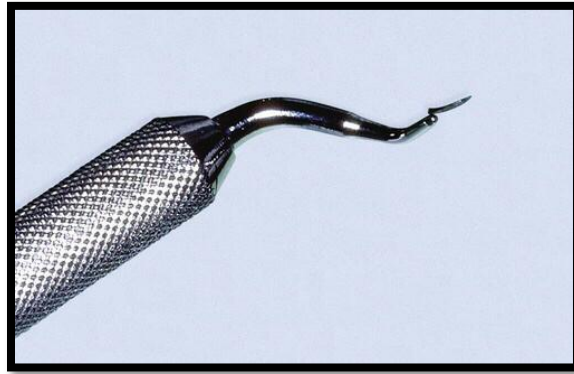
10) Identify and mention its side effects.



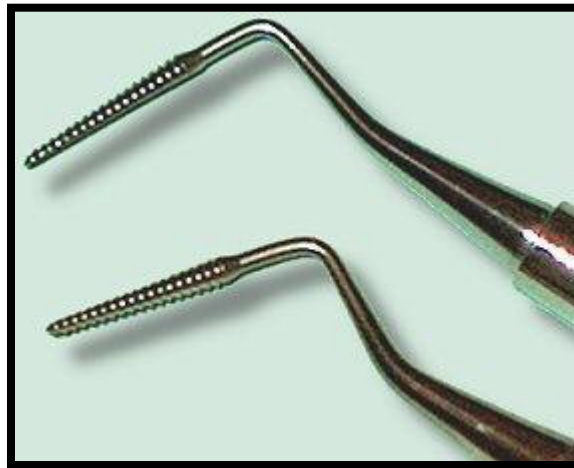
11) Identify the instrument and mention its motion of action.



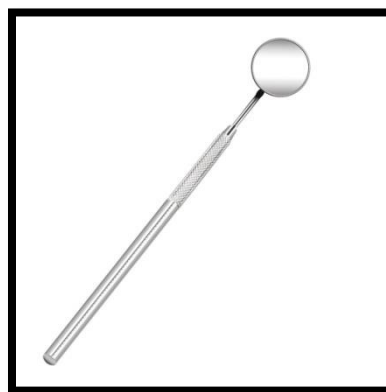
12) Identify the instrument and state its use.



13) Identify the instrument and state its use.




14) Identify, mention its types and state its use.



15) Identify the grasp and where is it used? Also mention other types of grasps.





 **GPS Map**
Camera Lite

PR4W+V5F, Solapur, Maharashtra 413255, India


Latitude
17.706878333333336°

Longitude
75.844515°

Local 11:10:46 AM
GMT 05:40:46 AM

Altitude 11.51 meters
Wednesday, 16.11.2022



 **GPS Map**
Camera Lite

PR4W+V5F, Solapur, Maharashtra 413255, India

Latitude
17.706878333333336°

Local 11:10:46 AM
GMT 05:40:46 AM

Longitude
75.844515°

Altitude 11.51 meters
Wednesday, 16.11.2022